

# CURVE™

Slurry Pumps


## VANADIUM CLIENT


FIELD APPLICATION REPORT  
027


### SCRUB RETURN PUMP

**pump & abrasion**®  
TECHNOLOGIES

**CURVE**™  
Slurry Pumps

 Pump and Abrasion Technologies® (Pty) Ltd.  
South Africa  
Reg. No.: 2013/114441/07 (est. 2004)  
592 Barolong Street, Unit 1, Icon Industrial Park  
Sunderland Ridge, Centurion, South Africa  
PO Box 54693, Wierda Park, 0149  
Centurion, South Africa  
Tel: +27 (0)12 666 0904/5 | Email: sales@pumpab.co.za

 Pump and Abrasion Technologies® (Pty) Ltd. Australia  
ABN: 62 617 704 435  
10 Remisko Drive, Forrestdale, WA, 6112  
Perth, Western Australia  
Tel: +61 (08) 9707 2682 | Email: info@pumpab.com.au

 Pump and Abrasion Technologies® Ltd. Canada  
BN: 737 871 483  
2054 Kingsway Blvd, Sudbury Ontario, Canada, P3B 4J8  
Tel: +1 604 763 2707 | Email: sales@pumpab.ca

 Pump and Abrasion Technologies® Ltd. USA  
Phoenix | Arizona  
Tel: +1 480 665 7384 | Email: brian@pabtglobal.com



pumpandabrasiontechnologies



@PumpandAbrasion



www.pumpandabrasion.co.za

**pump & abrasion**®  
TECHNOLOGIES

## INTRODUCTION

The Client contacted Pump & Abrasion Technologies® about their problematic Scrub Return application.

The Client's Scrub Return application had a wear life of 1-6 weeks, due to the abrasive nature of the particles and the varying pH levels.

## KEY TRIAL FOCUS SUCCESS

The main trial success criteria was longer life.

The client desperately needed a pump to achieve an extended duty, thus being able to operate with the varying pH levels and particle abrasiveness.

The pump also needed to deliver a constant flow of 100m<sup>3</sup>/h.

## APPLICATION DETAILS

	PREVIOUS PUMP	CURVE S150
Impeller	RUBBER	ACID RESISTANT POLY
Suction Liner	RUBBER	ACID RESISTANT POLY
Drive liner	RUBBER	ACID RESISTANT POLY
Volute/Casing	RUBBER	ACID RESISTANT POLY
Running speed	930	821

The CURVE S150 full acid resistant polyurethane pump surpassed the 6 weeks which the previous pump failed to do. The CURVE S150 is running for 37+ weeks, this is **6 times** the life of the previous pump.



The pump is still running and continues to increase savings.

## TOTAL OPERATING COSTS

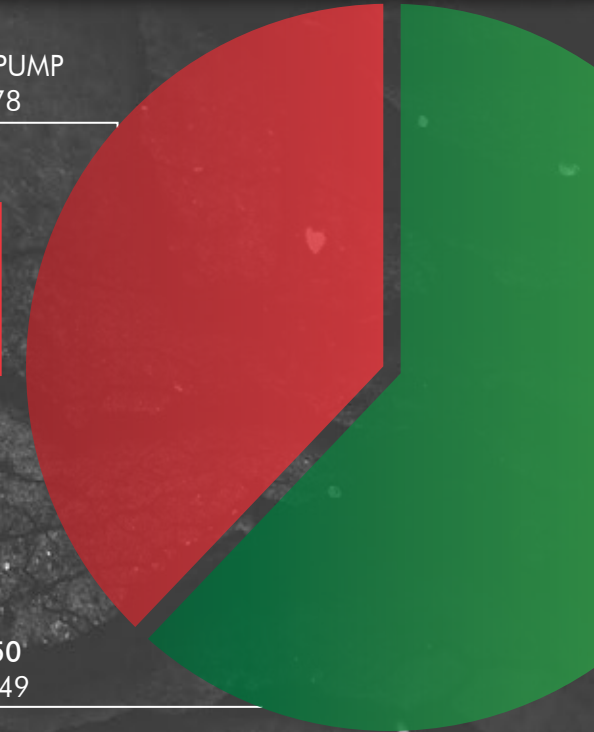
PREVIOUS PUMP  
R284 861.78

60.6%

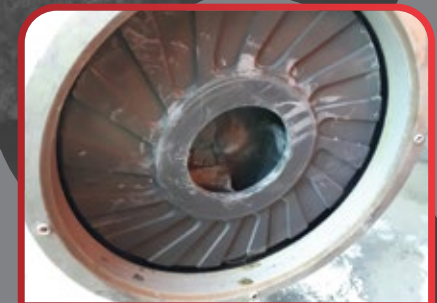
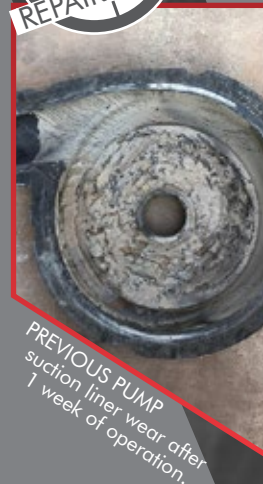
R 1 7 2 5 4 2

SAVINGS

CURVE S150  
R 112 319.49



## PREVIOUS PUMP VS CURVE S150



CURVE S150 impeller after 4 week inspection.

