


**pump & abrasion**<sup>®</sup>  
TECHNOLOGIES

**CURVE**<sup>™</sup>  
Slurry Pumps

 Pump and Abrasion Technologies<sup>®</sup> (Pty) Ltd.  
South Africa  
Reg. No.: 2013/114441/07 (est. 2004)  
592 Barolong Street, Unit 1, Icon Industrial Park  
Sunderland Ridge, Centurion, South Africa  
PO Box 54693, Wierda Park, 0149  
Centurion, South Africa  
Tel: +27 (0)12 666 0904/5 | Email: sales@pumpab.co.za

 Pump and Abrasion Technologies<sup>®</sup> (Pty) Ltd. Australia  
ABN: 62 617 704 435  
10 Remisko Drive, Forrestdale, WA, 6112  
Perth, Western Australia  
Tel: +61 (08) 9707 2682 | Email: info@pumpab.com.au

 Pump and Abrasion Technologies<sup>®</sup> Ltd. Canada  
BN: 737 871 483  
2054 Kingsway Blvd, Sudbury Ontario, Canada, P3B 4J8  
Tel: +1 604 763 2707 | Email: sales@pumpab.ca

 Pump and Abrasion Technologies<sup>®</sup> Ltd. USA  
Phoenix | Arizona

# CHROME & PLATINUM CLIENT

FIELD APPLICATION REPORT FAR026

## HYDRO MINING APPLICATION



pumpandabrasiontechnologies



@PumpandAbrasion



pumpandabrasion.co.za



# INTRODUCTION

The **Chrome & Platinum** client started re-mining their tailings dams using the Hydro mining application, supplied reworked tailings to a pump which then supplied 2 Competitor's pumps, in series to pump up to the Spiral plant.

After 6 weeks the second Competitor's pump in the discharge line was suffering with premature liner wear as well as premature bearing assembly loss.

**Pump & Abrasion Technologies®** installed a **CURVE™ C250** pump in replace of the second Competitor's pump as a trail on the most difficult application on their site.

## KEY TRIAL FOCUS SUCCESS

The **main focus** of this trial was to **increase the wear life** of the current pump.

## APPLICATION SPECIFICATIONS

	Competitor	CURVE™ C250
Impeller	METAL	METAL (M3)
Suction Liner	METAL	METAL (M3)
Drive liner	METAL	METAL (M3)
Volute/Casing	METAL	METAL (M3)
Running speed	821 rpm	807 rpm
Flowrate	168 l/s	168 l/s

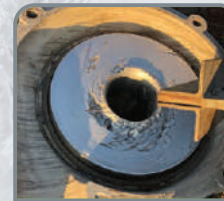
# BENEFITS

In addition to the extended wear life of the **CURVE™** pump, **Pump & Abrasion Technologies®** stabilized the Hydro mining applications control issues, which translated into consistent tonnages which increased drastically over the month.

	Achieved without CURVE™	Achieved with CURVE™	Target	% Increase
Tons	7921	15066	15000	47.42%

## ONSITE COMPARISONS

As seen in the pictures below, the Competitors pump's suction liner and drive liner showed failure after **2 weeks**. The **CURVE™ C250's** impeller shows no sign of wear after **8 weeks**.



Competitor pump - Throat bush

Competitor's pump images show clear indications of wear

VS

CURVE™ C250 shows no sign of wear



Competitor pump - Suction liner



CURVE™ C250 - Drive liner



CURVE™ C250 - Frame plate liner

ACHIEVED SAVINGS **R1 264 446**

TOC REDUCTION

**58.6%**